

KS1309 InnoForestView

Innovative information technologies for analysis of negative impact on the cross-border region forests

Review of the project by the Lead Partner





- Total costs of the project: 702 119 €
- CBC Programme financing: 561 695 €

**Duration of the project in months: 27
(1st of March 2019 – 31st of May 2021)**

Main goals:

01

To create new opportunities and advanced technologies for clean and pure environment, sustainable management of nature for cross-border region citizens

02

To attract tourists and new inhabitants with pure and clean environment

Project partners:



St. Petersburg State Unitary Enterprise
«St. Petersburg Information and Analytical Centre» (Lead Partner)



St. Petersburg Federal Research Center of the Russian Academy
of Sciences



Natural Resources Institute Finland



Federal state budgetary educational institution of higher education
«St.Petersburg State Forest Technical University»

Main project results:

1. Creation and integration of Finnish and Russian unified innovation information system

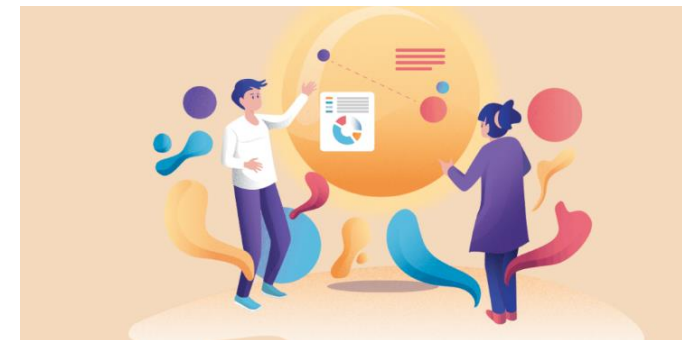
- ✓ Developed system ensures **transparency** and **availability** of project results to all stakeholders;
- ✓ Stakeholders can continue to expand existing database;
- ✓ Created system is open to both **specialists** and **regular users**;
- ✓ The platform operates on the base of open source databases and libraries and do not require any special equipment;
- ✓ The **sustainability** of developed system operation will be maintained by project partners – St. Petersburg Federal Research Center of the Russian Academy of Sciences.



Open access to developed system prototype



<https://innoforest.regionview.ru/home?puuid=45d7f854-3b02-4a77-9b6c-10c859537526&lang=en>



Main project results:

2. Implementation of best practices exchange and joint activities of Finish-Russian specialists using advanced information technologies, Earth Observation data emergency situation impact

- ✓ Information about three main types of disturbances in the forests on the cross-border area: **forest fires, insects attack and diseases spread, human impact in the roadside forests** was collected;
- ✓ Pilot zones both in Finland and in Russia were analyzed using **innovative approaches**;
- ✓ Data from ground-based research and Earth Observation materials was collected.



Main project results:

3. Raising public awareness about state of the forest and environment security.

- ✓ The project has made a contribution to **positive atmosphere** for further Finnish-Russian **cooperation** in the forestry area;
- ✓ There are numerous of people in St. Petersburg and Finland (**online and offline**), who have improved their awareness of environmental issues, problems and possible solutions by visiting project thematic events.



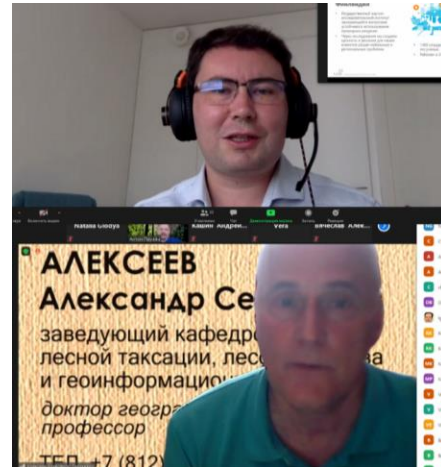
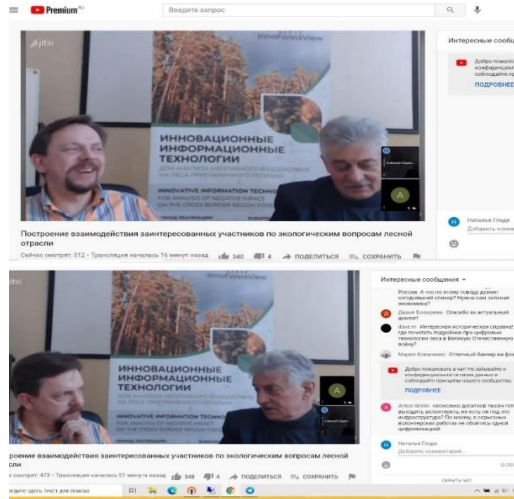
SOON! WE ARE GOING TO START SERIES OF THE THEMATIC WEBINARS



Subscribe to our project page and don't miss announcement and schedule of events

 InnoForestView


CBC 2014-2020
SOUTH-EAST FINLAND - RUSSIA



Lessons learnt:

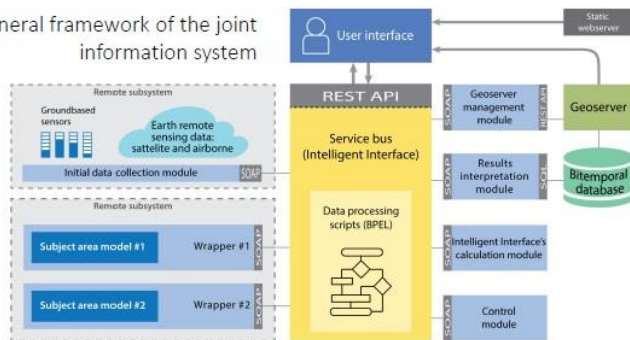
- ✓ Despite the COVID-19 restrictions, project partners managed to ensure **efficient communication** with stakeholders and target groups by technical means and succeeded in forming **solid consortium of partners**;

Expectations and plans for 2021-2027 period:

- ✓ In the next Programme period we are planning to implement new projects together with **InnoForestView** project partners;
- ✓ The innovative information system developed in the framework of the project can be **modernized**; for example, the scope of negative factors influencing forest state can be expanded.



General framework of the joint information system



Most inspiring moments:





Thank you for your attention!



Maria Kuzko

**Head of the Department of Innovative and International Projects, project secretary
St. Petersburg State Unitary Enterprise
«St. Petersburg Information and Analytical Centre»**

**+7 921 305 97 90
kuzko@iac.spb.ru**



Funded by the European Union,
the Russian Federation and
the Republic of Finland.